

S-Series Model Numbers

|   |   |   |   |   |   |   |   |
|---|---|---|---|---|---|---|---|
| 1 | 2 | 3 | 4 | 5 | 6 | 7 | 8 |
|   |   |   |   |   |   |   |   |

**2 - Nom. GPM**

5  
9  
12  
17  
20  
28

**4 - Nominal Pressure**

|    |         |
|----|---------|
| 3  | 25 psi  |
| 5  | 50 psi  |
| 8  | 75 psi  |
| 10 | 100 psi |
| 13 | 125 psi |
| 15 | 150 psi |

**6 - Phase**

1  
3

**7 - Discharge Switch Options**

|     |                       |
|-----|-----------------------|
| NF  | No Switch (Standard)  |
| FL  | Flow Switch           |
| 2FL | Two Flow Switches     |
| LF  | Low Flow Switch       |
| 2LF | Two Low Flow Switches |
| PS  | Pressure Switch       |

**8 - Additional Options**

|     |                              |
|-----|------------------------------|
| DP  | Differential Pressure Switch |
| ENC | Outdoor Enclosure            |
| FM  | Foot Mounted Pumps           |
| ISO | Vibration isolators and flex |

**1 - Series**

S Standard S-Series  
SX Customized S-Series

**3 - Strainer Option**

|    |                   |
|----|-------------------|
| D  | Duplex (Standard) |
| S  | Simplex           |
| 2S | Two Simplex       |

**5 - Seal**

|   |                                   |
|---|-----------------------------------|
| M | Buna-N Mechanical Seal (Standard) |
| V | Viton Mechanical Seal             |

**Request an S-Series Quote**

Please fill out all bold fields

Flow: \_\_\_\_\_ GPM      Pressure: \_\_\_\_\_ PSI

Available Ph/Hz/Voltage: \_\_\_\_\_ Ph/ \_\_\_\_\_ Hz/ \_\_\_\_\_ V

Mechanical Options

Strainer (Choose one):  Simplex       Duplex

Seals (Choose one):

- Buna-n Mechanical Seals
- Viton Mechanical seals

- UL Listed Strainer
- Premium Efficiency Motors
- Welded Piping (Recommended for 150 psi and above)
- Flange Mounted Pumps
- Flexible pump connections and vibration isolators
- Painted carbons steel pump set enclosure

- Please Send Me a Customized Specification
- My Specification is Attached

Controls Options

NEMA:  1    3R    4    4X    12    Other \_\_\_\_\_  
 UL 508A Labeled

- Lead Lag with
  - Flow Switch (Standard for most applications)
  - Pressure Switch
- Auto Alternation
- Leak Switch
- Strainer DP Switch

Additional Information:

\_\_\_\_\_

\_\_\_\_\_

\_\_\_\_\_

\_\_\_\_\_

\_\_\_\_\_

Company \_\_\_\_\_

Contact Name \_\_\_\_\_

Position \_\_\_\_\_

Phone \_\_\_\_\_

Email \_\_\_\_\_

Job Name \_\_\_\_\_

Date Quote Needed \_\_\_\_\_

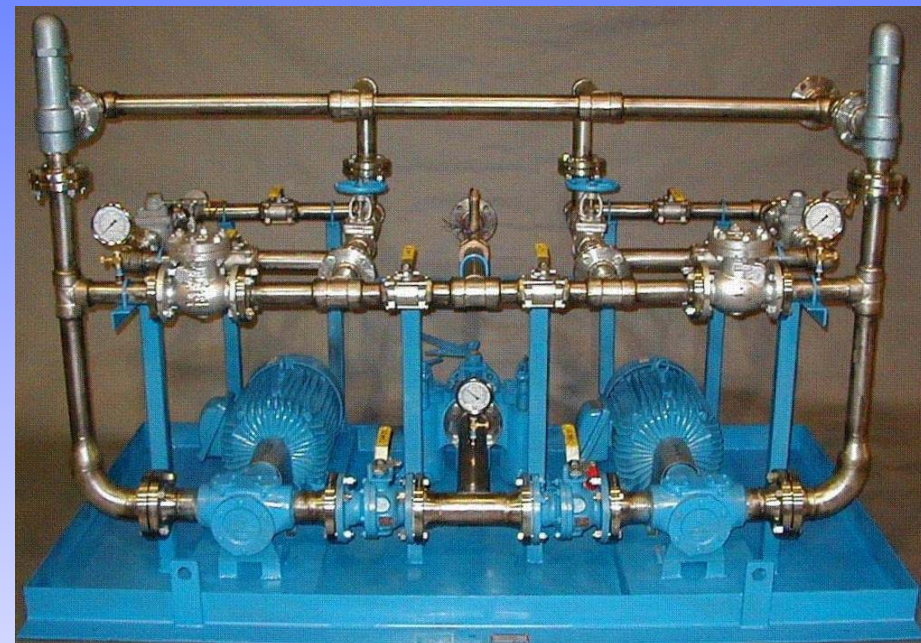


**Engineering Value Into Every Solution**  
 Call to speak with an application engineer today

**1-800-726-7110**  
 info@geigerinc.com

# S-Series Packaged Fuel Oil Pump Sets

Economical pumping solutions, backed by Smith-Koch's 90 years of experience in the fluid handling industry



**Capacities of 6 to 65 GPM**

**Pressures up to 150 PSI\***

- ◆ Factory built and tested for reliability and ease of installation
- ◆ Easily customizable to fit your specification
- ◆ Covered by SK Systems quality assurance program
- ◆ Expedited submittals and delivery available
- ◆ 3D drawings and models



Smith-Koch Systems  
 A GEIGER Pump & Equipment Company

For assistance with your application, questions, or quotations, please contact us:

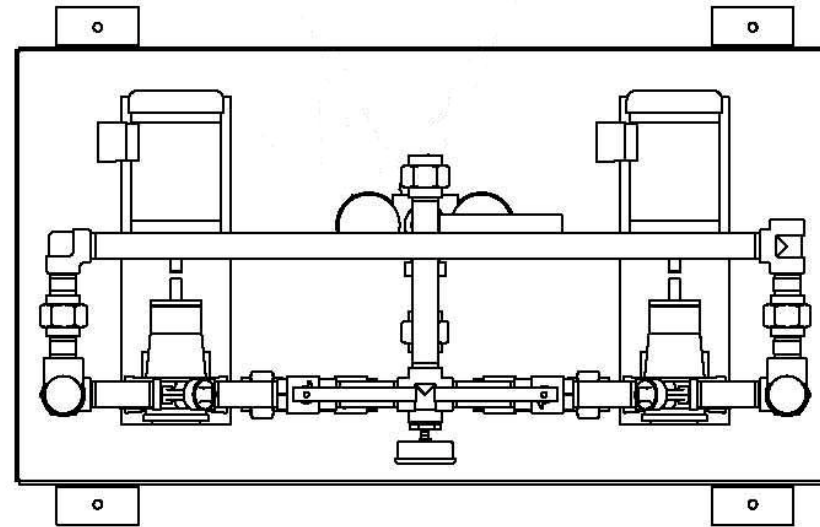
Email: info@geigerinc.com  
 Telephone: 1-800-726-7110  
 Fax: (610)-361-9241

## Standard Features

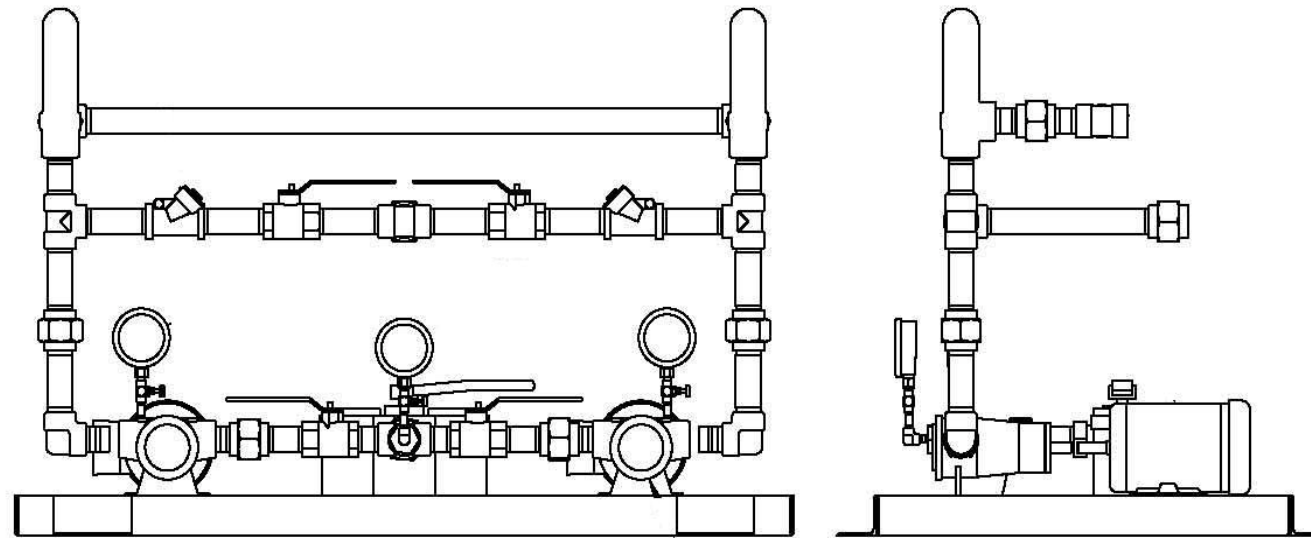
- ◆ Duplex arrangement (Simplex option available)
- ◆ Ball valves and check valves for pump isolation
- ◆ Reliable Viking™ pumps, UL listed pumps available
- ◆ Name brand motors
- ◆ Stainless Steel, liquid filled gauges
- ◆ Drip pan base with 2 3/4" lip
- ◆ UL listed duplex strainer for continuous operation
- ◆ External safety relief valves
- ◆ Single or three phase motors
- ◆ Comprehensive factory testing



- ◆ All submittals include customized mechanical drawings, available as standard mechanical drawings or 3D electronic e-drawings viewable with free software.



# S-Series



| S-Series Size | Flow GPM @ 25psi | Flow GPM @ 50psi | Flow GPM @ 75psi | Flow GPM @ 100psi | Flow GPM @ 125psi | Flow GPM @ 150psi |
|---------------|------------------|------------------|------------------|-------------------|-------------------|-------------------|
| S-5           | 6                | 6                | 5                | 5                 | 4.5               | 4                 |
| S-9           | 10               | 10               | 9                | 9                 | 8.5               | 8                 |
| S-12          | 13               | 13               | 12               | 12                | 11                | 10                |
| S-17          | 19               | 18               | 17               | 17                | 15.5              | 15                |
| S-20          | 21               | 21               | 20               | 20                | 19                | 18                |
| S-28          | 30               | 29               | 28               | 28                | 26.5              | 26                |

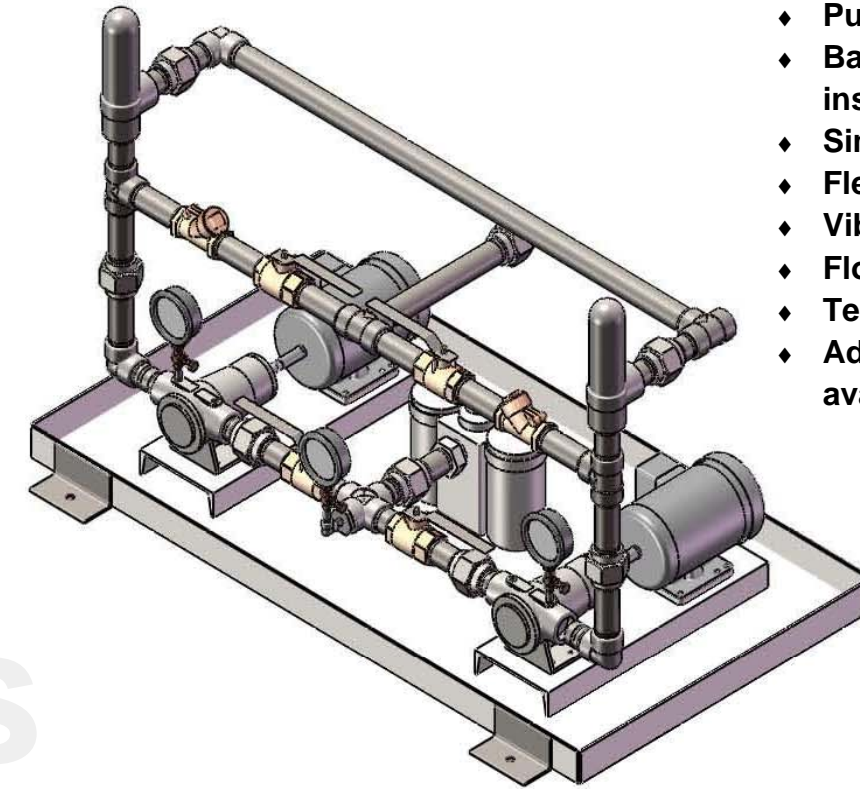
Please see attached curve for S-52

## Custom Models

From high pressure fuel oil systems to bio-diesel batching, we have experience with a wide variety of applications.

### Sample of Custom Options

- ◆ Pump set Enclosures
- ◆ Back pressure valves, installed or shipped loose
- ◆ Simplex strainers
- ◆ Flexible connections
- ◆ Vibration isolators
- ◆ Flow switches and meters
- ◆ Temperature switches
- ◆ Additional options available



## Control Options

- ◆ Customized for your application
- ◆ PLC based controls available
- ◆ Lead-Lag operation
- ◆ Auto alternation
- ◆ Pan leak detection
- ◆ Differential pressure switches
- ◆ Flow or pressure switches
- ◆ NEMA 1, 4, 4X, 12 available

### Need a specification?

Standard specs available on our website:

[www.fueloilpump.com](http://www.fueloilpump.com)

Or contact us for a spec customized for your application

Don't see what you need? Smith-Koch E-Series, H-Series, and custom systems offer solutions for your most demanding or unusual applications.

